

Rolph C of E Primary School and Nursery

Newsletter 14th May 2021

This week you have received a letter from Essex LA which explains how step three of the Government's Covid-19 roadmap will affect schools. As you will have seen, the protective measures continue to remain in place in school so that we are able to keep the school open for the benefit of all children. With restrictions being lifted or reduced outside of schools, the increased mixing that this will cause makes it even more crucial that we all continue to follow the Government guidance. At each stage of the Government's road map, Rolph will follow all advice for schools as appropriate.

At Rolph the teachers are busy planning trips and activities for next half term, so expect to have some lovely events for your children to look forward to.

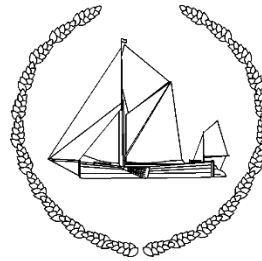
Next week Bikeability for Year 5 will take place. If your child has a place booked on this course, please remember to send them in with their cycle helmet and bicycle.

Thank you for your support to help keep our school a safe place to learn and work.

Ms Bickersteth
Acting Headteacher

Pop Art from Year 4

Whilst awaiting the opportunity to visit art galleries again, it has been good to enjoy year 4's art work this week.



Vine
Diocese of Chelmsford
Vine Schools Trust

Telephone: 01255 861317

Email: admin.rolph@dvcst.org

Website: <https://rolphcofeprimary.co.uk>



Romans 5: 3-5

“But not only that! We even take pride in our problems, because we know that trouble produces endurance, endurance produces character, and character produces hope. This hope doesn't put us to shame, because the love of God has been poured out in our hearts through the Holy Spirit, who has been given to us.”

ROLPH SCHOOL VALUES

Congratulations to all the recipients of a certificate for showing the value of Endurance:

Nursery	James and Emily
Reception	George and Dottie
Year 1	Tilly-Lou and Daisy
Year 2	Eliza and Miles
Year 3	Henry and Zane
Year 4	Noah and Millie
Year 5	Joe and Lewis H.
Year 6	Poppy and Scarlett

HOUSE POINTS RESULTS

Totals	
Earth	193
Air	143
Water	214
Fire	196

Congratulations to Water who were the winners this week.

ATTENDANCE



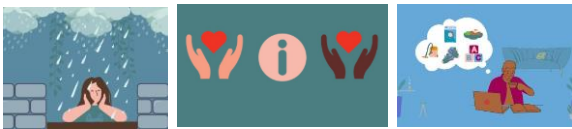
The figures below are based on attendance between 7th May and 13th May.

Class	Attendance (%)
R	99.05
1	99.13
2	94.52
3	94.67
4	97.19
5	90
6	78.85
Total	93.21

Currently our whole school attendance for the year to date is 94.11%.

Each class celebrates good attendance by adding parts to their class Mr. Potato Head and when it is complete, they agree a whole class reward with their teacher.

MENTAL HEALTH AWARENESS WEEK



Nearly nine out of ten people with mental health problems have been affected by stigma and discrimination. The impact of the Covid-19 pandemic has affected many people's mental health.

The **Mental Health Foundation** website has lots of helpful resources and contacts.

www.mentalhealth.org.uk

<https://www.mentalhealth.org.uk/campaigns/mental-health-awareness-week/tips>

The **Church of England** has shared reflections in a booklet which has been updated with new resources. They seek to provide hope, reassurance and comfort. The booklet is available online and is on the school website in the Information Hub, Wellbeing section.

[https://www.churchofengland.org/sites/default/files/202003/10961%E2%80%A2Mental%20Health%20Reflections WEB.pdf](https://www.churchofengland.org/sites/default/files/202003/10961%E2%80%A2Mental%20Health%20Reflections%20WEB.pdf)

Childline:

<https://www.childline.org.uk/toolbox/calm-zone/>

RSA NEWS

We have arranged for a Bag2School collection on Tuesday 29th June. Further details will be sent home soon.

Please continue to use the links below when purchasing everyday items to help raise funds for the RSA:

<https://smile.amazon.co.uk/ch/1105878-0>

and

<https://www.easyfundraising.org.uk/support-a-good-cause/step-1/?char=19601>

SAVE YOUR CRISP PACKETS - RECYCLE & EARN POINTS FOR ROPLH

A wheelie bin has been placed at the front of the school, just inside the wall by the pedestrian gate. Could all parents please save their empty crisp nut and popcorn packets and place them in the wheelie bin. Please make sure the packets are completely empty and flattened before placing them in the bin, it is a good idea to store them in the multi-pack outer bags for convenience, twice the recycling!

The next RSA meeting will be on June 10th at 9.30am. Further details to follow shortly.

PARKING

We actively encourage our families travelling to school by car to be considerate and safe when parking near the school. Can we also ask you to be mindful of your speed around the school ensuring the safety of the children, families and the wider community in the village. Thank you for your cooperation in this matter.

REMINDERS

Please pass on any important messages about collection arrangements, medicines or other individual matters via the school office.

If your child will not be attending school for any reason including illness, please call the school office on 01255 861317 and leave a message on option 1.

Breakfast Club places are available to book via SchoolMoney. These must be booked in advance so the necessary preparations can be made in line with the school's risk assessment.

Dinners can also be booked via SchoolMoney. The new 3-week menu can be found on the school website, <https://rolphcofeprimary.co.uk/key-information/lunch-menu/>. If a dinner has not been booked, please ensure your child is sent in with a packed lunch.

DONATIONS FOR NURSERY

The Nursery are looking for donations of any lego, toy transport vehicles, including cars, trains and lorries or any small world figures such as the McDonald Happy Meal figures. Please bring any items to the school office. Thank you.

11+ EXAMINATION REGISTRATION

Registration for 11+ examinations for 2022 entry runs from 18th May to 2nd July 2021. An information leaflet has been sent to Year 5 parents and carers. The website: <https://csse.org.uk/> has all information related to the CSSE 11+ registration and examination process.

CORONAVIRUS (COVID-19)



What to do if your child is displaying coronavirus (COVID-19) symptoms.

Anyone who has coronavirus (COVID-19) symptoms, such as a raised temperature, a new continuous cough, or a loss of or change to their sense of smell or taste, should stay at home and self-isolate immediately. They should not attend an out-of-school setting. They should follow the guidance for households with possible coronavirus (COVID-19) infection.

The full guidance is available via this link:

<https://www.gov.uk/government/publications/covid-19-stay-at-home-guidance/stay-at-home-guidance-for-households-with-possible-coronavirus-covid-19-infection>

If you have a positive test result but do not have symptoms, stay at home and self-isolate as soon as you receive the results. Your household needs to isolate too.

Households of school pupils can order home testing kits. Information about the Lateral Flow Device testing can be found on the school website using the link below:

<https://rolphcofeprimary.co.uk/wp-content/uploads/2021/03/ECC-Home-Testing-for-Households-March-21.pdf>

DATES FOR YOUR DIARY

May

- 17th & 18th - Bikeability Course for Year 5 - Group 1
- 19th & 20th - Bikeability Course for Year 5 - Group 2
- 19th - National Numeracy Day
- 18th - Registration opens for 11+ examinations
- 25th - Summer Safety Assembly - TBC
- 31st - 4th June - Half term holiday

June

- 15th June - Class Photographs

July

- 16th - Last day of the Summer term